



A LITTLE HISTORY

Founded by decree by King Louis XIII in 1635, the Jardin Royal des Plantes Médicinales opened in 1640 and offered public lessons in botany, chemistry and anatomy, as well as housing naturalist collections in the Droguier du Roi (royal drug cabinet), the forerunner of today's galleries.

By the 18th century, the royal garden had become one of Europe's leading scientific establishments. Its surface area was doubled, and the Droguier du Roi became the Cabinet d'Histoire Naturelle. This was expanded and opened to the public. The garden's first heated glasshouses were built for plants brought back from expeditions, as was a metal gazebo that was at the cutting edge of technology at the time.



in 1889 and the Galerie de Paléontologie et d'Anatomie comparée in 1898. Two glasshouses were also built between 1834 and 1836.

Other spaces were created during the 20th century: the Galerie de Botanique (1935), a new Art Deco glasshouse (1937), as well as the Alpine garden, the ecological garden, the iris garden, etc. In 1994, after thirty years of closure and a spectacular metamorphosis, the Galerie de Zoologie reopened as the Grande Galerie de l'Évolution. The 21st century saw the renovation of the glasshouses and the Galerie de Minéralogie, as well as the creation of the Galerie des Enfants (Children's Gallery) and the Cabinet de Réalité Virtuelle.



On 10 June 1793, during the French Revolution, the Muséum d'Histoire Naturelle was founded. It comprised the Jardin National des Plantes and the Cabinet d'Histoire Naturelle.

The Ménagerie opened in 1794. Throughout the 19th century, new buildings were erected to house the collections, which continued to grow in size and diversity. The Galerie de Géologie et de Minéralogie was inaugurated in 1841, followed by the Galerie de Zoologie



WELCOME TO THE JARDIN DES PLANTES

THIS 26-HECTARE BOTANICAL GARDEN IS THE MUSÉUM'S HISTORICAL HEART AND HOLDS MANY SURPRISES IN STORE FOR YOU. COME STROLL AMID THE THEMED GARDENS, STATUES AND REMARKABLE TREES, OBSERVE THE ANIMALS AT THE ZOO, WANDER THROUGH THE GLASSHOUSES AND DISCOVER SOME OF THE WORLD'S MOST UNIQUE COLLECTIONS IN THE GALLERIES...



JARDIN DES PLANTES PARIS

M A P



PRACTICAL INFORMATION

ACCESS

36, 38, 40 rue Geoffroy-St-Hilaire
2, 10, 18 rue Buffon
47, 57 rue Cuvier
Place Valhubert 75005 Paris

PUBLIC TRANSPORT

Metro 5, 10 / RER C: Gare d'Austerlitz; metro 7: Jussieu, Censier-Daubenton
Bus: 24, 57, 61, 63, 67, 89, 91
Batobus: Jardin des Plantes

OPENING HOURS

The garden is open daily from 8am to 5:15pm in winter and until 7:45pm in summer. Opening hours for specific sites at: jardindesplantesdeparis.fr/en

RESTAURANTS

The restaurant Les Belles Plantes, the café in the Grande Galerie de l'Évolution and three snack kiosks in the Garden await you for a gourmet break. Three ice-cream kiosks are also open April to early November.

CONTACTS

Reception:
+33 (0)1 40 79 56 01
+33 (0)1 40 79 54 79
contact.jdp@mnhn.fr
Group reservations:
resamuseum@mnhn.fr
Accessibility information:
info-accessibilite@mnhn.fr

ONLINE TICKETS
billetterie.mnhn.fr

ANNUAL MUSÉUM PASS

Unlimited admission to all public museums, zoos and gardens belonging to the Muséum.
Pass available at Jardin des Plantes ticket desks.

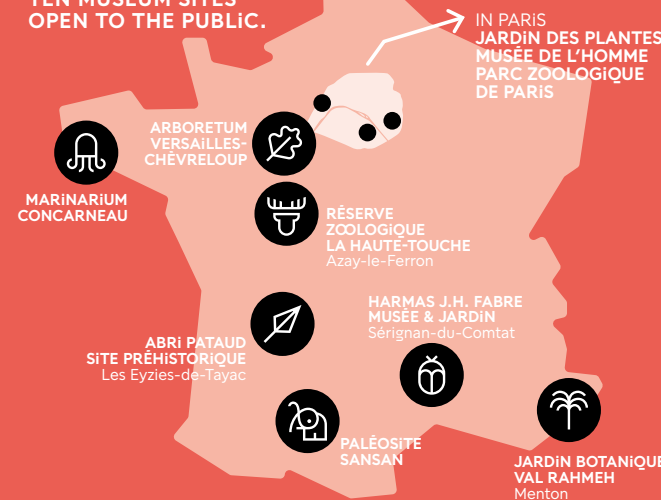
FIND US

Jardin des Plantes
jardindesplantesdeparis.fr/en
 
Muséum national d'Histoire naturelle
mnhn.fr/en
    

WELCOME TO THE MUSÉUM

The Muséum National d'Histoire Naturelle is an exceptional institution: it is a research centre, a university, a museum, a botanical garden and a zoo, all rolled into one. Drawing on four centuries of scientific discovery, it contributes to the preservation of our planet's future. Its many sites throughout France will help you to better understand nature in all its dimensions and the world around us. Be sure to explore them!

THE JARDIN DES PLANTES IS ONE OF TEN MUSÉUM SITES OPEN TO THE PUBLIC.



THE LIBRARY

The library was officially founded on 10 June 1793, at the same time as the Muséum d'Histoire Naturelle. Today, almost two million documents are held within a network that is widely open to the public, offering consultation of printed and electronic books and journals, maps and plans, manuscripts, scientific and institutional archives, drawings, photographs, works of art and scientific instruments.

WORTH NOTING

The ground floor of the library at the Jardin des Plantes is open to the general public. As well as borrowing books, you can admire a delightful 18th century cabinet of curiosities.

Access free of charge. Contact and opening hours:
bibliotheques.mnhn.fr



ACTIVITIES



and one orchids, Feb.-Mar.) and *Automne tropical* (Tropical autumn, Oct.-Nov.). In the **Jardin des Plantes**, free exhibitions take you behind the scenes at the Muséum and showcase works of art. You'll also be able to enjoy the enchanting illuminations during the winter holiday season.

As well as visiting the permanent spaces, be sure to enjoy our wide range of original programming, both recurring and seasonal.

TEMPORARY EXHIBITIONS

Every year, the **Grande Galerie de l'Évolution** presents a major exhibition on level -1, focusing on our planet's biological and geological diversity. Other exhibitions are sometimes held in the **Galerie de Minéralogie**. The **Grandes Serres** offer two annual events: *Mille et une orchidées* (A thousand

INTERPRETATIVE AND CULTURAL OFFERING

A wide range of activities are on offer throughout the year and at exhibitions: guided tours, events, meetings, screenings, workshops... and of course the must-see Fête de la Nature (Nature festival, May), Fête de la Science (Science festival, Oct.) and Les Rendez-vous Nature (Nature Discovery) in summer.

Full programme at
jardindesplantesdeparis.fr/en

WHAT TO SEE



GRANDE GALERIE DE L'ÉVOLUTION

Discover the diversity of the living world and the history of evolution in a spectacular setting*. The permanent exhibition, which features 7,000 marine and terrestrial animals on four levels, helps visitors to understand the role of biodiversity and the impact of human activities on our planet.

> **Open daily except Tuesdays and 1st January, 1st May, 25th December.**

DON'T MISS the augmented reality experience *Revivre* in the Hall of endangered and extinct species (level 2) and the Virtual Reality Cabinet (level 3).

> **Open Saturdays, Sundays, bank and school holidays. Closed Tuesdays and 1st January, 1st May, 25th December.**



GALERIE DE PALÉONTOLOGIE ET D'ANATOMIE COMPARÉE

Comparative anatomy is the science of examining similarities and differences to better understand how animals function. By deciphering fossils, paleontology takes us back in time. From the impressive assembly of skeletons on the ground floor to the fabulous collection of fossils (dinosaurs, mammoths, plants, ammonites, etc.) upstairs, take a trip 540 million years back in time!

> **Open daily except Tuesdays and 1st January, 1st May, 25th December.**

Opening hours vary depending on the site and season. Details at: jardinesdesplantesdeparis.fr/en

*Grande Galerie de l'Évolution renovated by Paul Chemetov et Borja Huidobro - scenography by René Allio - France



GALERIE DE GÉOLOGIE ET DE MINÉRALOGIE

Explore our planet's staggering geological diversity. The *Trésors de la Terre* (Treasures of the Earth) exhibition features almost 600 remarkable pieces: giant crystals, multicoloured minerals, rough gems, historical jewels, precious metals, ornamental stones, meteorites... You'll be amazed!

> **Open daily except Tuesdays and 1st January, 1st May, 25th December.**



GRANDES SERRES

Imagined as a voyage of discovery, the botanical trail in the glasshouses is an opportunity to explore 2,500 plants from different continents. The buildings, each an architectural gem of metal and glass, showcase plant biodiversity by re-creating highly contrasting environments (tropical rainforests, deserts and other arid zones, New Caledonia) and retracing the history of terrestrial plants.

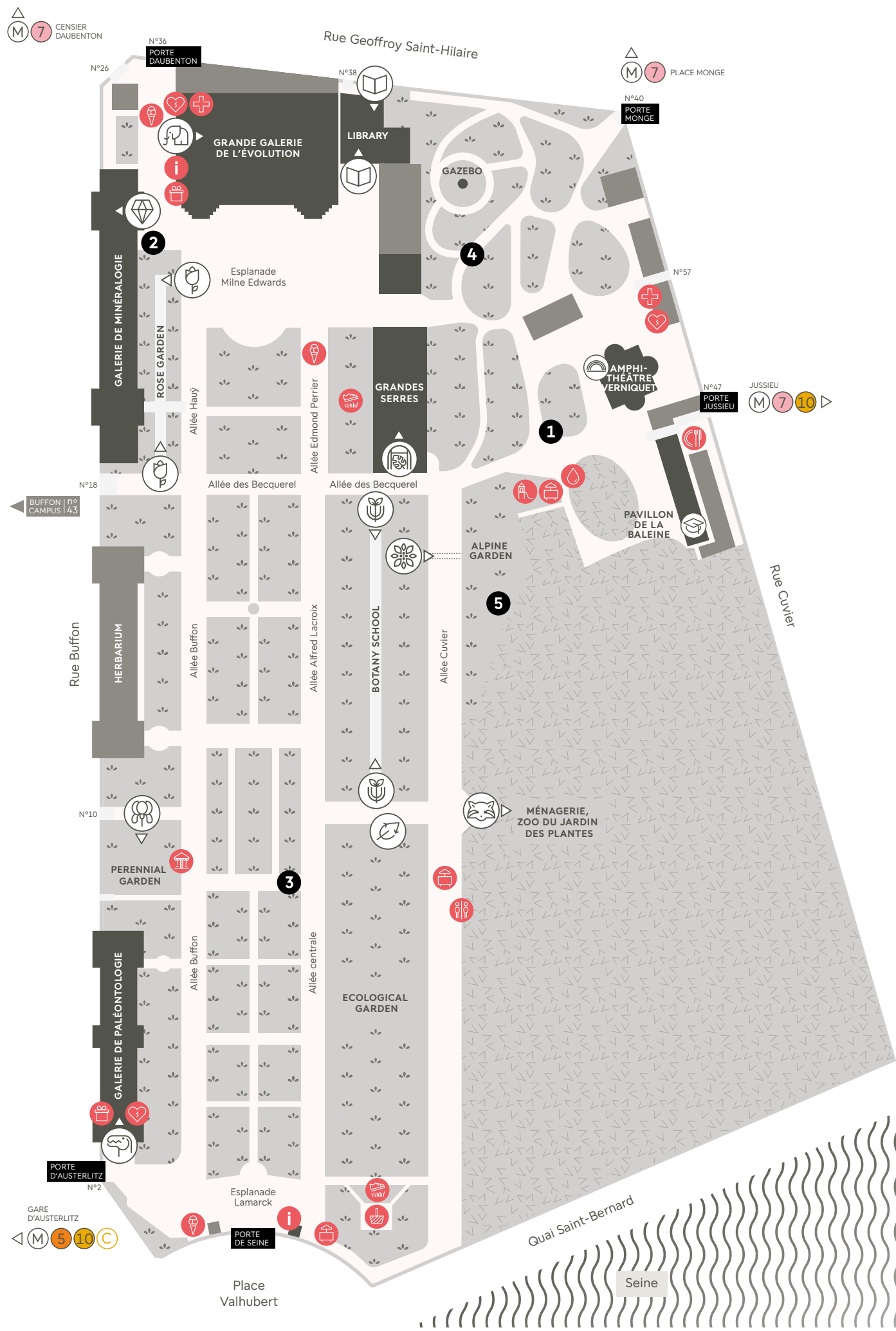
> **Open daily except Tuesdays and 1st January, 1st May, 25th December.**



MÉNAGERIE, ZOO DU JARDIN DES PLANTES

Created in 1794, the Menagerie is one of the oldest zoos in the world. It is home to 500 animals, 40% of which are endangered species: the red panda, the Malayan tapir, the clouded leopard, the golden lion tamarin, the poison dart frog... In this 5-hectare labyrinth of vegetation, wonderment and a change of scenery await young and old alike.

> **Open daily except 25th December.**



GARDEN RULES



- Lawns, trees and flowers are alive and fragile. Picking plants and walking on flowerbeds and lawns is prohibited, unless stated otherwise.
- Objects on display in the galleries are rare and fragile. Touching or damaging them is prohibited.

GARDEN HIGHLIGHTS

CENTRAL GARDENS

Following the principles of the "French garden", the rectangular beds are set between two double rows of plane trees, leading the eye down a vast perspective measuring 480 m in length and 2.5 ha in all. Planted with seasonal flowers in October and May, they feature over 600 varieties of bedding plants.

REMARKABLE TREES

Among the Garden's majestic trees, you'll be able to admire a magnificent Oriental plane 1 planted under Buffon's stewardship in 1785, a Japanese pagoda tree 2 grown from seeds sent in 1747 from... China, a Japanese 'Shirotae' cherry 3 with an exceptional tabular habit and covered in blossoms in April, as well as a cedar of Lebanon 4 planted in 1734, which is said to have ended its journey to Paris in Bernard de Jussieu's hat! And let's not forget the pistachio tree 5 grown from seeds brought back from the Levant by Tournefort in 1702 and which was used to demonstrate the sexuality of plants.

LABYRINTH - BUFFON'S GAZEBO

There's nothing natural about the hill on which you'll find the labyrinth: until the 14th century, it was a rubbish heap! Now it is covered in vegetation and majestic trees. In 1788, the architect Verniquet built a gazebo at the top, the Gloriette de Buffon, the oldest metal structure in Paris.

ROSE GARDEN

Planted in 1990, the rose garden demonstrates the great diversity of the genus *Rosa*, which has been cultivated since Antiquity. With some 320 horticultural varieties of roses, both ancient and modern, the garden offers a symphony of colours and fragrances, peaking in May and June. In a nod to the collections in the adjoining Galerie de Minéralogie, rocks can also be found among the rose bushes.

BOTANY SCHOOL

This open-air school offers an introduction to plant classification. With over 2,500 plant species, it showcases the biodiversity of temperate regions. Species evolution is explored through phylogenetic classification, reflecting the evolutionary history of plants.

ALPINE GARDEN

Created in 1931 in a sheltered hollow, this garden is home to more than 2,000 plant species from the mountainous regions of France and the world: Alps, Pyrenees, Corsica, Atlas, Caucasus, North America, Himalayas, etc. Growing them on a plain is a real challenge for gardeners. Streams, rock gardens and foliage create varied microclimates that are ideal for delicate plants.

> **Open mid-February to mid-November.**

IRIS AND PERENNIAL GARDEN

This Dutch-style garden with its brick flower beds and lawned paths was created in 1964 and features some 450 species of ornamental perennials and climbing plants. More than a hundred varieties of iris display an exceptional palette of colours when they blossom in May.

ECOLOGICAL GARDEN

Created in 1932, the ecological garden evokes the biodiversity of the Île-de-France region through a variety of natural and artificial habitats: forests, falls, ponds, vineyards, etc. It is home to a wide range of wildlife, both sedentary and passing through. To preserve its tranquillity, gardeners intervene as little as possible.

> **Guided tours only.**

SERVICES

