



## A LITTLE HISTORY

The first collections of "all things rare in Nature" were assembled at the King's Cabinet in the Royal Garden of Medicinal Plants (now the Jardin des Plantes) in 1635.



Building on these, the zoology collections were moved to a new structure in 1889, the Gallery of Zoology, designed by Jules André. At the time, 3 to 4 million specimens were displayed!

For safety reasons, the building was closed to the public in 1965. After renovation led by architects Paul Chemetov and Borja Huidobro and scenographer René Allio, it reopened in 1994 as the Grande Galerie de l'Évolution. its innovative museography has made it a model for museums around the world.



## WELCOME TO THE GRANDE GALERIE DE L'ÉVOLUTION

COME AND DISCOVER THE FASCINATING HISTORY OF EVOLUTION AND DIVERSITY OF LIFE IN A SPECTACULAR SETTING! SOME 9,500 SPECIMENS, SPREAD OVER FOUR LEVELS, ARE ON DISPLAY TO INSPIRE REFLECTION AND WONDER IN YOUNG AND OLD ALIKE...



GRANDE GALERIE DE L'ÉVOLUTION

MAP



## LEARN MORE



### PODCASTS (in French) *Les curieuses histoires du Muséum*

Seven gallery specimens are featured, including the elephant Siam, the snowy albatross and the Tasmanian tiger. Coproduction France Culture / Muséum

### Bestioles

Listen with your to the adventures of several animals: polar bear, cockroach, moose, starfish, etc. Coproduction France Inter / Muséum

Listen at [mnhn.fr/nos-podcasts](https://mnhn.fr/nos-podcasts) and other podcast platforms



### PUBLICATIONS *The Grand Gallery of Evolution*

Enrich your visit with this illustrated guide, available at the giftshop and in select bookstores. Éditions du Muséum national d'Histoire naturelle

Grande Galerie de l'Évolution rénovée par MM. Chemetov et Huidobro - mise en scène René Allio - France création lumière : Agence Stéphanie Daniel

## ACTIVITIES

### TEMPORARY EXHIBITIONS

Every year, a major exhibition celebrates the biological and geological diversity of our planet, drawing on the wealth of the Museum's collections and current research.  
**> level -1**

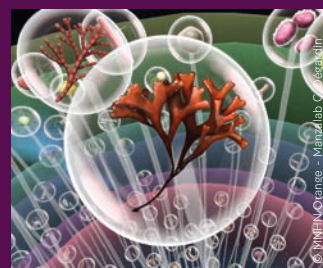
### THE REVIVRE EXPERIENCE

Come face to face with extinct animals, revived through augmented reality.  
**> level 2**, Hall of endangered and extinct species



### VIRTUAL REALITY CABINET

Choose your programme: *Journey into the Heart of Evolution*, *Virtual Arctic Expedition* or *The Starry Sand Beach*.  
**> level 3**



### CULTURAL PROGRAMMING

A range of events, including guided tours, lectures and screenings, are offered throughout the year for all ages.  
**> permanent exhibition, auditorium, temporary exhibition...**

More information at [jardindesplantesdeparis.fr/en](https://jardindesplantesdeparis.fr/en)

## PRACTICAL INFORMATION

### Grande Galerie de l'Évolution

Jardin des Plantes  
36, rue Geoffroy-Saint-Hilaire - 75005 Paris

### TRANSPORTATION

Metro 7, 10:  
Censier-Daubenton, Jussieu  
Bus: 24, 67, 89

### OPENING HOURS

Open daily except Tuesdays,  
10am to 6pm (last admission 5pm).  
Closed 1st January, 1st May and 25th December.

### ONLINE TICKET SALES

[billetterie.mnhn.fr](https://billetterie.mnhn.fr)

### ANNUAL MUSEUM PASS

Unlimited admission to all public museums, zoos and gardens of the Muséum. Pass available at Jardin des Plantes ticket desks.

### SERVICES

For your convenience, lockers, toilets, baby-changing facilities and wheelchairs are available.

On level 1, a cafeteria serves drinks and snacks all day.

A wide selection of gifts and souvenirs are available at the giftshop in the lobby, level 0.

### CONTACTS

Reception:  
+33 (0)1 40 79 54 79 /  
+33 (0)1 40 79 56 01  
[contact.jdp@mnhn.fr](mailto:contact.jdp@mnhn.fr)

Giftshop: +33 (0)1 40 79 39 40

Group and school reservations:  
[resamuseum@mnhn.fr](mailto:resamuseum@mnhn.fr)

Accessibility:  
[info-accessibilite@mnhn.fr](mailto:info-accessibilite@mnhn.fr)

### FIND US

[f @jardindesplantes](https://www.facebook.com/jardindesplantes)  
[@le\\_museum](https://www.instagram.com/le_museum)

[jardindesplantesdeparis.fr/en](https://jardindesplantesdeparis.fr/en)

## WELCOME TO THE MUSEUM

The Muséum National d'Histoire Naturelle is an exceptional institution, part research centre, part university, part museum, part botanical garden and part zoo. Drawing on four centuries of scientific discovery, it works diligently in favour of our planet's future. its many sites throughout France will help you to better understand nature in all its dimensions and the world around us. Be sure to explore them!

THIS GALLERY IS LOCATED IN THE JARDIN DES PLANTES, ONE OF TEN MUSÉUM SITES OPEN TO THE PUBLIC.



MNHN - Mars 2024 - Imprimé sur papier issu de forêts gérées durablement - Photo de couverture © MNHN - B. Faye



# FLOOR PLAN

## LEVEL 3 THE EVOLUTION OF LIFE

- Origins of a theory
- Reproduction and transmission
- Transmission and selection
- Reconstructing the history of life
- Retracing life on Earth
- Evolution, anything new?
- Virtual Reality Cabinet

## LEVEL 2 HUMANS, A FACTOR OF EVOLUTION

- Introduction
- Hunting, fishing, gathering
  - Domestication
  - Species introductions
  - Changing landscapes
  - Pollution
  - Things are getting complicated
  - The planet today
  - Hall of endangered and extinct species
  - Revivre, extinct animals in augmented reality

## LEVEL 1 LIFE'S DIVERSITY - TERRESTRIAL HABITATS

- Arctic / Antarctic
- African savannah
- Sahara desert
- Amazonian rainforest
- Species classification
- Collections and taxidermy

## LEVEL 0 LIFE'S DIVERSITY - MARINE HABITATS

- Deep-sea plains
- Hydrothermal vents
- Pelagic habitats
- Coral reefs
- Coastal habitats
- Arctic / Antarctic

## LEVEL -1 TEMPORARY EXHIBITION

### GALLERY RULES

- Animals on display are fragile, please do not touch them.
- Flash photography and tripods are prohibited.

### SERVICES

- Reception / information
- Toilets
- Tickets
- Changing tables
- Lockers
- Panoramic lifts
- Cafeteria
- Temporary exhibition lift
- Giftshop

3

2

1

0

-1

